

# WMX SERIES

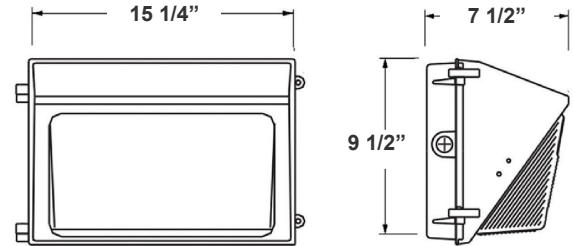
WMX-MD-20-80W-30K  
WMX-MD-20-80W-40K  
WMX-MD-20-80W-50K

LED OUTDOOR LIGHTING

**WESTGATE**  
THE FUTURE IS HERE...AND IT'S QUITE BRIGHT!



Customer Name: \_\_\_\_\_  
Project Name: \_\_\_\_\_  
Note: \_\_\_\_\_ | Type: \_\_\_\_\_



15 1/4"(W) x 9 1/2"(H) x 7 1/2"(D)

Ideal for general site lighting, alleys, loading docks, doorway, pathway, and parking areas.

## Features

- ADC12 Aluminum Heat Sink, Outdoor Powder Coating
- Multi-Power Switch is inside the Fixture
- 7-year warranty
- Prismatic Borosilicate Glass Lens

## Technical Specifications

### Electrical:

- Input Wattage: 20/40/60/80W
- Input Voltage: 120-277V AC 50/60Hz
- Input current: 1.0 A
- Power factor: >0.9
- Efficacy: 130 LPW

### Mechanical:

- ADC12 Aluminum Heat Sink, Outdoor Powder Coating
- Lens: Prismatic Borosilicate Glass Lens
- Same Footprint as Traditional HID Wall Packs
- Four 1/2" Hubs: 1 top, 1 on Each Side, 1 Rear
- Mounting: Wall Mounting
- Operating Temperature: -40°F ~ 104°F
- Lifespan: 70000 Hrs.
- IP rating: IP65, Wet Locations

### Lighting:

- Dimming: 0-10V Dimming
- Multi-Power Switch is inside the Fixture
- Total Lumens: 11200LM Max.
- Color Temperature: 3000K/4000K/5000K
- CRI: >70

### Applications:

- Ideal for general site lighting, alleys, loading docks, doorway, pathway and parking areas.
- Replace existing HID wall packs
- Great for use with photocell

### Other Models:

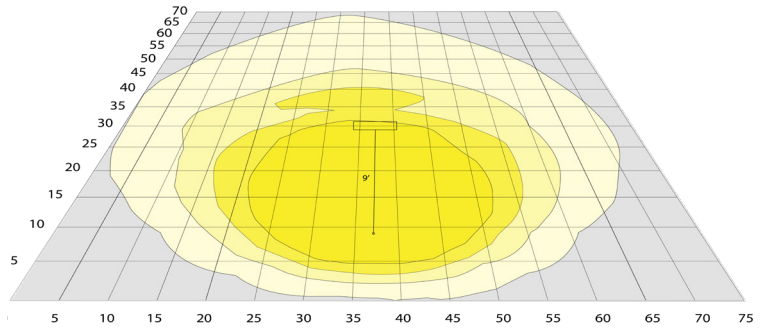
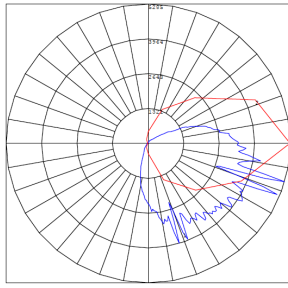
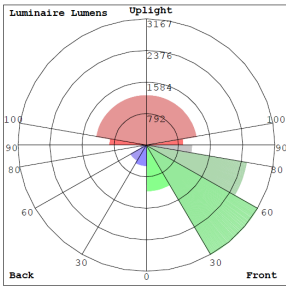
- |                                    |                                    |                                       |
|------------------------------------|------------------------------------|---------------------------------------|
| • 30W   4200LM   WMX-SM-15-30W-30K | • 50W   6800LM   WMX-MD-20-50W-30K | • 120W   16500LM   WMX-LG-50-120W-30K |
| • 30W   4200LM   WMX-SM-15-30W-40K | • 50W   6800LM   WMX-MD-20-50W-40K | • 120W   16500LM   WMX-LG-50-120W-40K |
| • 30W   4200LM   WMX-SM-15-30W-50K | • 50W   6800LM   WMX-MD-20-50W-50K | • 120W   16500LM   WMX-LG-50-120W-50K |



Phone: (877) 805-2252 | Fax: (877) 805-2252  
www.westgatemfg.com |



**Photometrics:** WMX-MD-20-80W



BUG Rating: B3-U4-G4

Area 70'x 75' Mounting Height: 9'

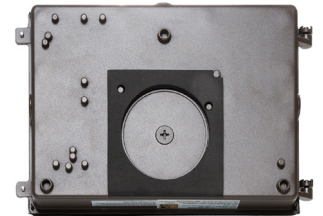
**Other Views:**



Side View



Front View



Back View

**Performance Table:** WMX-MD-20-80W

MODEL NO.	Wattage	Voltage	Lumens	Color Temp.	BUG Rating	LPW
WMX-MD-20-80W-30K	20W	120-277V	2600LM	3000K 4000K 5000K	B3-U4-G4	130
			2700LM			
			2800LM			
WMX-MD-20-80W-40K	40W		5400LM			
			5600LM			
			5800LM			
WMX-MD-20-80W-50K	60W		8000LM			
			8300LM			
			8600LM			
WMX-MD-20-80W-50K	80W	10400LM				
		10800LM				
		11200LM				



# Sample Ordering

Model	Size	Min. Watt	Max. Watt	Color Temp.
WMX	MD	20	80W	<input type="text"/> 30K = 3000K 40K = 4000K 50K = 5000K

## Accessories:

Blank = No Option For Accessories  
 WML-SH2= SHIELD FOR WMXPRO 60W

## Factory-Installed Options:

Blank = No Option For Accessories  
 OPT-EM-OD3INT= INTERNAL EMERGENCY BACKUP BATTERY  
 OPT-SEN-3MRLV-5= PROGRAMMABLE MICROWAVE (BI-LEVEL FOR 80W & UP)  
 OPT-PC-B= BUTTON  
 OPT-CLR-85= COLOR PAINT  
 WEC-8RC= REMOTE CONTROL  
 OPT-TRS-T20= TAMPER RESISTANT SCREW

## ACCESSORY:



WML-SH2

## FACTORY-INSTALLED OPTIONS:



OPT-EM-OD3INT



OPT-PC-B



WEC-8RC



OPT-SEN-3MRLV-5

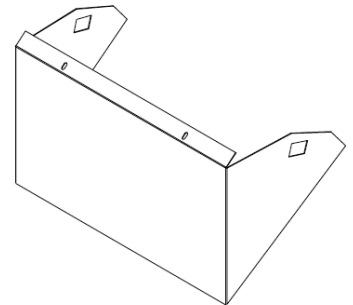
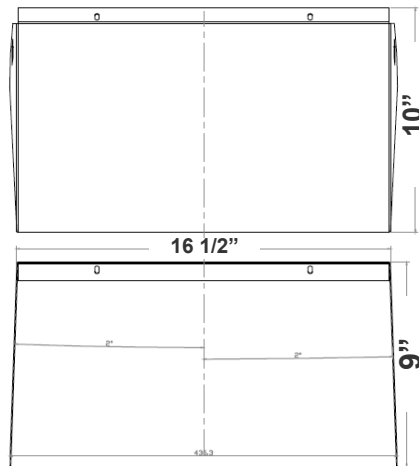
## Example:

1. WMX-MD-20-80W-50K (FOR 80W MAX 50K FIXTURE 120-277V)
2. WMX-MD-20-80W-100K (FOR 80W MAX 50K FIXTURE 120-277V)  
 OPT-EM-OD3INT (INTERNAL EMERGENCY BACKUP BATTERY)

## Dimensions:



WML-SH2  
 SHIELD FOR WMXPRO 120W



**COLOR CHART:** \* Choose from one of our Premium Colors with no set-up fee.

**Gloss:**



SILVER METALLIC  
70 GLOSS  
T357-GR105



SILVER METALLIC  
30 GLOSS  
T353-GR06



DARK RED 90  
GLOSS  
P009-RD02



INTERNATIONAL  
ORANGE 90  
GLOSS  
T009-OG26



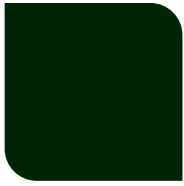
SAFETY ORANGE  
90 GLOSS  
T009-OG01



YELLOW 90  
GLOSS  
T009-YL14



YELLOW 90  
GLOSS  
T009-YL01



TRAFFIC GREEN  
70 GLOSS  
T007-GN16



GREEN 70 GLOSS  
T007-GN13



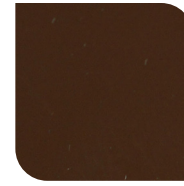
GREEN 60 GLOSS  
C006-GN03



BLUE 90 GLOSS  
T009-BL01



DARK BLUE 80  
GLOSS  
T008-BL20



RAL 8028 TERRA  
BROWN 90 GLOSS  
C209-BR358

**Hammer:**



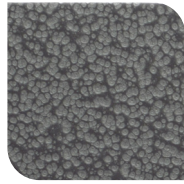
WHITE HAMMER  
T013-WH09



BEIGE HAMMER  
T013-BG38



GREY HAMMER  
C013-GR08



SILVER  
HAMMERTONE  
T064-GR05



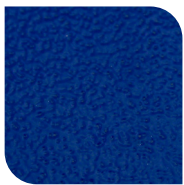
BLACK HAMMER  
T013-BK62



RED HAMMER  
T013-RD15



GREEN HAMMER  
T013-GN220



BLUE HAMMER  
T013-BL468



BRONZE HAMMER  
T012-BR161

**Texture:**



WHITE TEXTURE  
C031-WH120



FLINT GRAY  
TEXTURE  
T243-GR522



BLACK TEXTURE  
C241-BK109



RED TEXTURE  
T241-RD129



BLUE TEXTURE  
C241-BL544



OIL RUBBED  
BRONZE TEXTURE  
T291-BR251

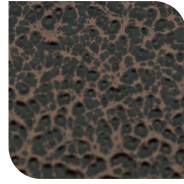
**Vein:**



BLACK/WHITE  
VEIN  
T075-WH34



SILVER VEIN  
T375-BK26



COPPER VEIN  
EXTERIOR  
T075-BK211



GOLD VEIN  
T375-BK10



COPPER VEIN  
T375-BK07

